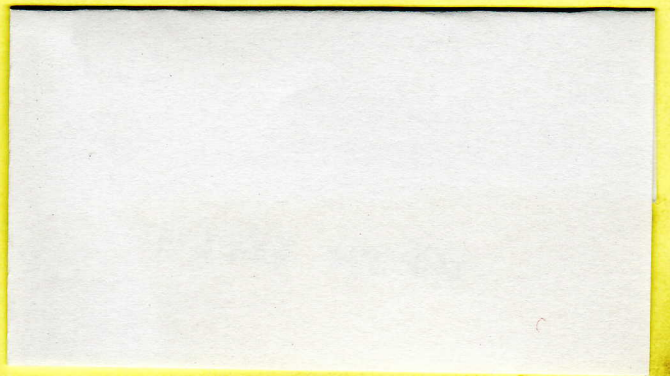
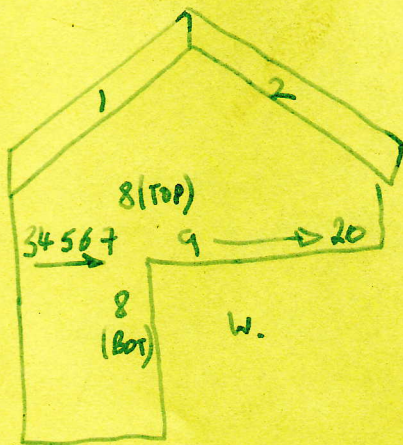
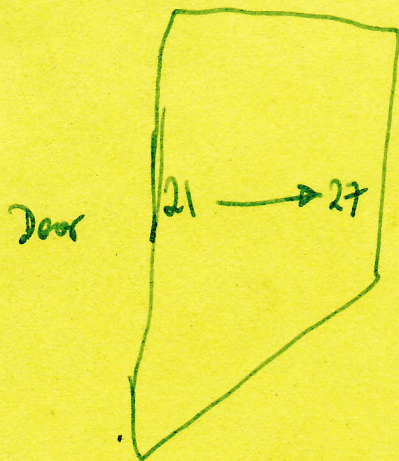


The white barge-banding from inside above the window has a bevelled edge, to match the roof.

South Wall (From inside)



Under stairs (from Locking Room)

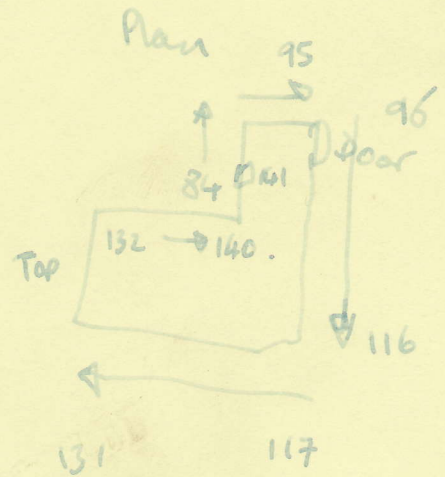


151c)  
84-140 Wooden boarding around stairs

140 - "Middle" inside of stairs.

141 - left of locking room door (from stairs).

142 - 151 short locking tray grid supports to beam.

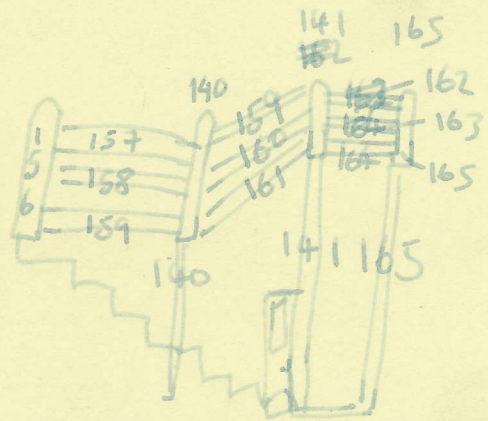


152-154 As 44-45, 18" higher, just below trays.  
Short and long support bars connect to these.

156-164 Stairs bandsters.

165 - Upright.

locking trays numbered as per levers.



166 - U-profile, lever trough, jaiser

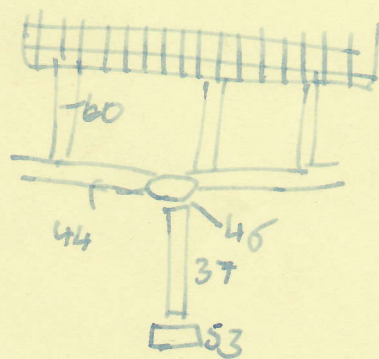
167-172 - Odd electric lock support for L-61.

173-1787 REAR main uprights (top)

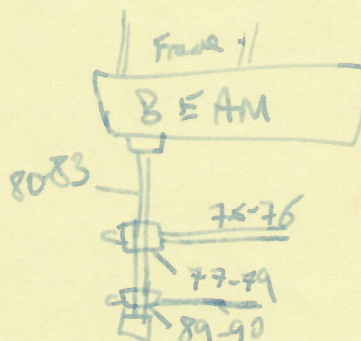
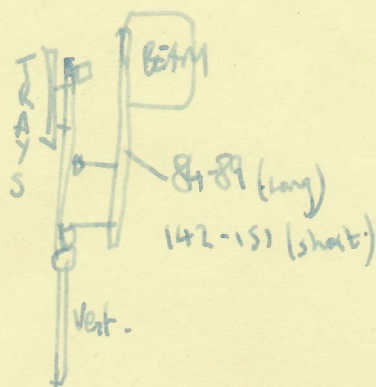
178-182 (uprights)

183-188 (bottom)

- 28-30 Catwalk supports - shoulder height
- 31-35 Cable ties (above catwalk)
- 36 Superflows (?) support for access platform, rear of frame, inside of low end wooden upright.
- 37-43 Vertical supports from floor - locking tray grid.
- 44-45 Horiz. bar at top of above
- 46-52 Connectors for above two
- 53-59 Floor plates for 37-43
- 60-74 Vertical bars for locking tray grid
- 75-76 HORIZONTAL support under frame beams
- 77-79 - Connectors for above
- 80-83 (E2W) Vertical beam supports
- 84-89 Long vertical locking tray supports



89(sic)-90.  
 LOWER SUPPORT.  
 on back of beam support





1  
 Loo - 13'4" - 13" (Stone) <sup>2'8"</sup> - 11'4" - Stairs

2  
 Loo - 13'4" - 13" VSA 3'9" - 11'4" - Stairs

3  
 Loo - 12'11" - 2'7" - 13" - 2'7" - 11'6" - Stairs

4  
 Loo - 3'8" - 7'2" - 3'7" - 1'3" - 12'7" - Stairs

5  
 10'0" - 22'3" - Stairs

6  
 22'1" - 16'8" - Balcony

7  
 14'8" 15'4" - 22'0" - Balcony

8  
 19'4" - 18'0" - Balcony.

Beyond Frame - Right of frame

9  
 6'8" - 3'1"

12  
 15'3"

15  
 22'0"

10  
 3'0" - 6'7"

13  
 8'11"

11  
 6'8" - 3'1"

14  
 8'11"